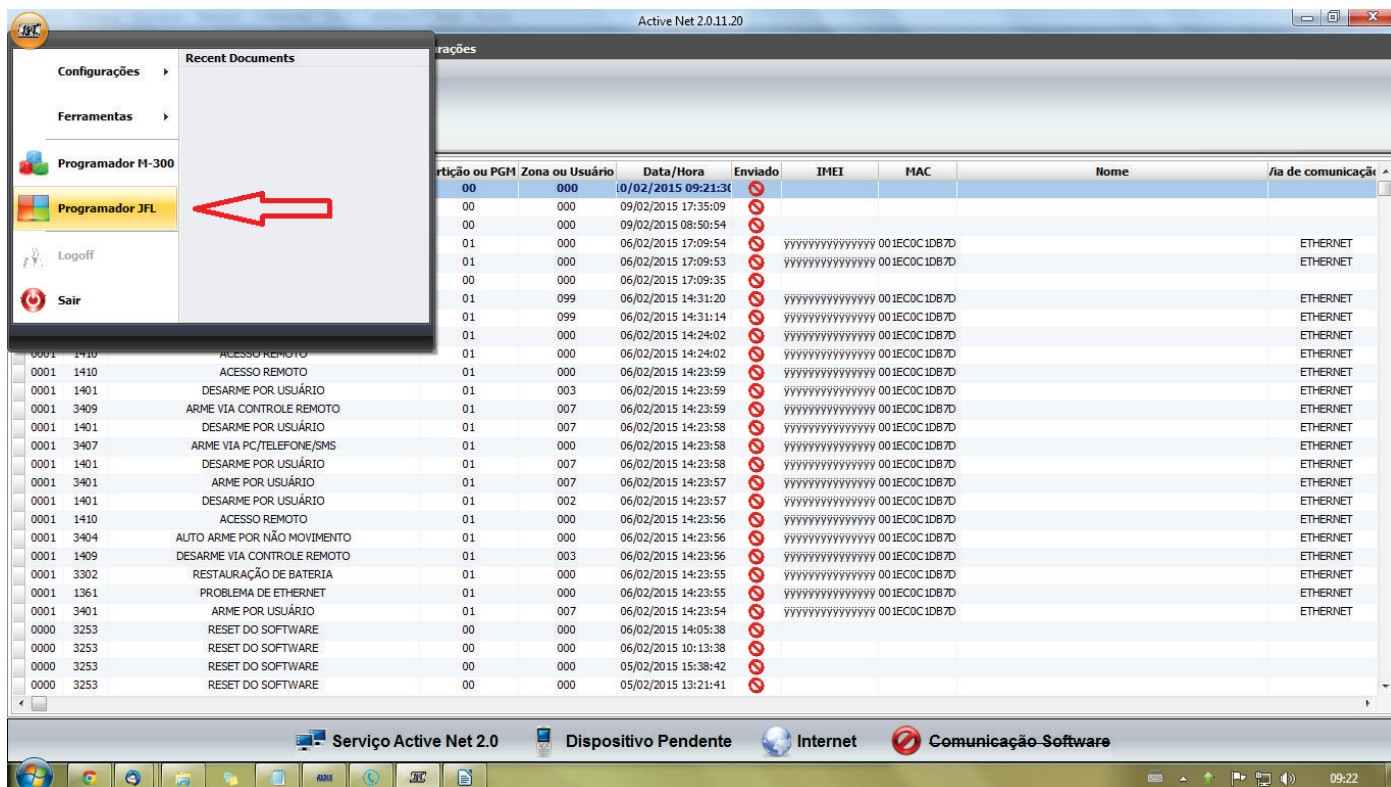


GUIA RÁPIDO

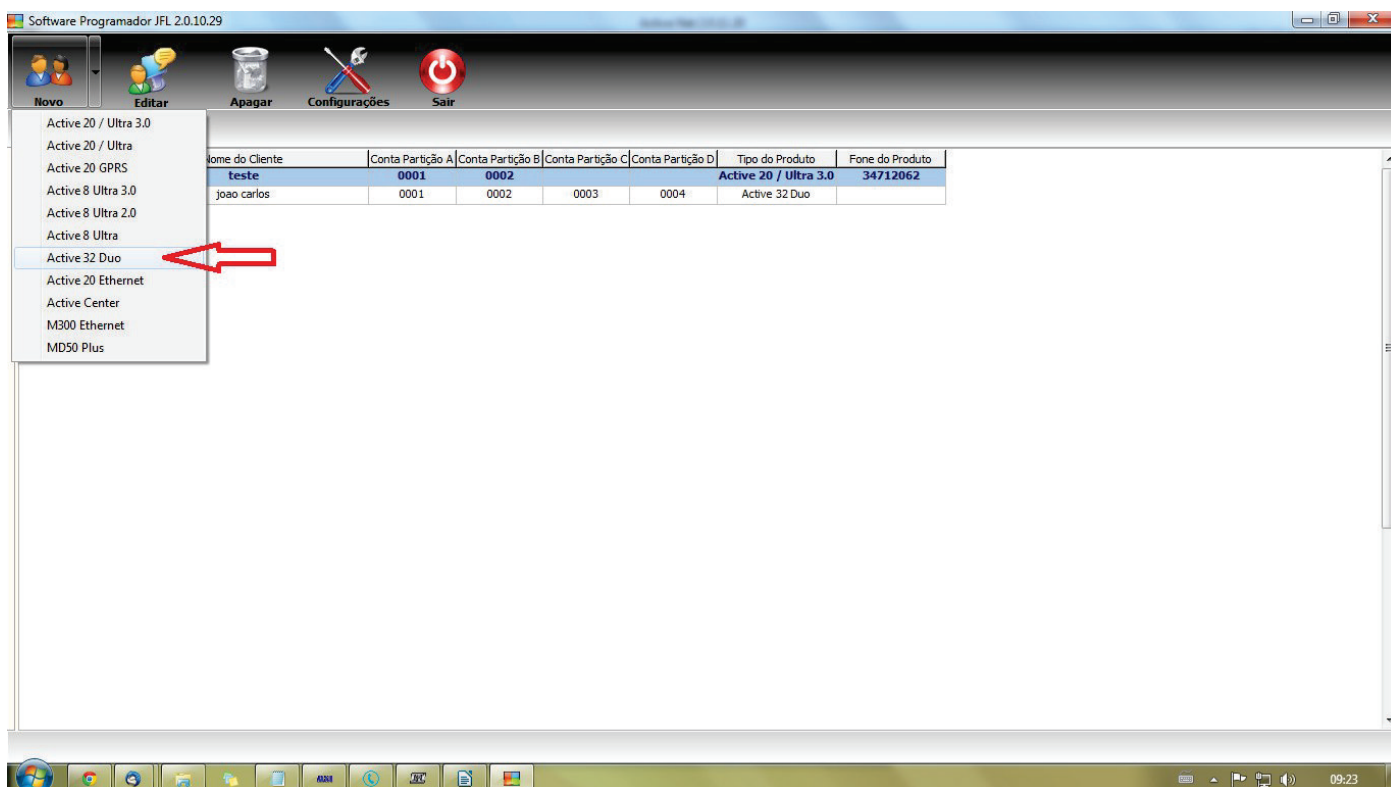
Conectando a central via Ethernet



1 - Acesse o programador JFL;



02 - Escolha a central desejada

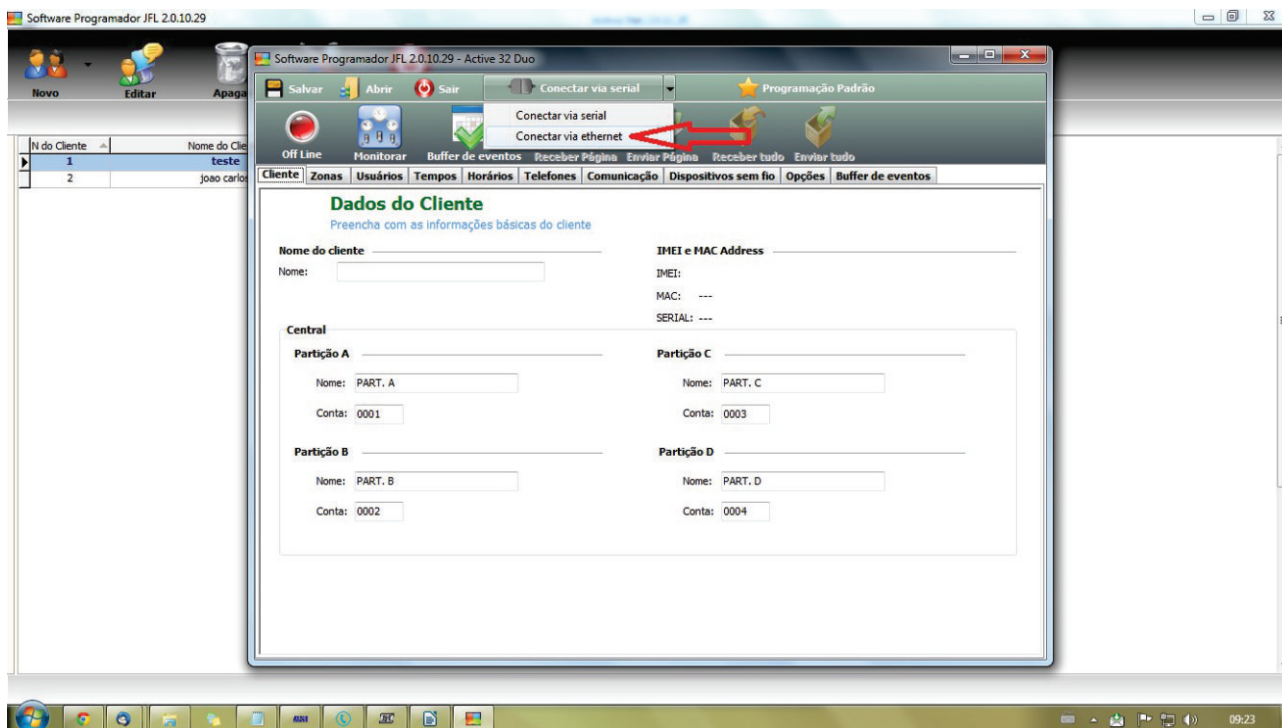


GUIA RÁPIDO

Conectando a central via Ethernet



3 - Escolha o tipo de conexão (via Ethernet).



4- Preencha os campos IP / Porta e Senha para o acesso remoto a central desejada

